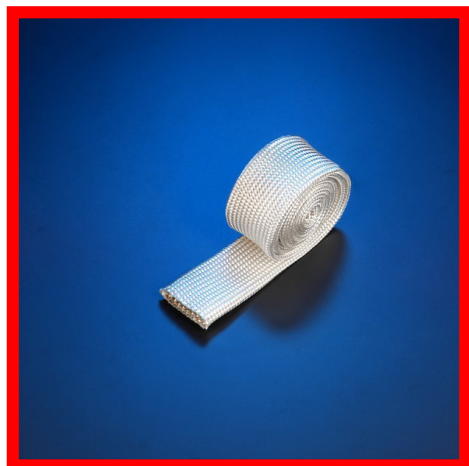


Very High Temperature Fiberglass Braided Heat Treated Sleeve: Premium Grade – Passes UL VW-1 Flame Test



This Braided fiberglass sleeve is fabricated from high quality type E fiberglass that will not burn and will withstand continuous exposure to temperatures of 1000°F / 537°C.

Heat Treating removes organics and impurities from the sleeve, and makes the product dimensionally stable to the high-end of its continuous exposure temperature (providing minimal shrinkage).

This material resists most acids and alkalis and is unaffected by most bleaches and solvents. It is highly flexible and conformable.

The braiding is fine and dense, providing excellent protective coverage. Common applications for heat treated sleeve is for the protection of wiring, cables and hoses in consumer, industrial and commercial appliances and equipment such as ovens, kilns, toasters and heaters. The base fiber is manufactured to the specifications of ASTM D-578, ASTM committee D13, and subcommittee D13.18.

1000°F / 537°C continuous rating, high insulation value & excellent personnel protection

Very High Temperature Fiberglass Braided Heat Treated Sleeve – Premium Grade UL 1441 (VW-1) / Dielectric C-3 / UL Thermal Class S & C			
Part Number	ID Size in / mm / dash #	Thin Wall Spool Feet / Price	Standard Wall Spool Feet / Price
AB-BFHTS-M006-04-X	0.250 / 6 / -4	250 / \$140.00	500 / \$815.00
AB-BFHTS-M010-06-X	0.375 / 10 / -6	100 / \$110.00	500 / \$915.00
AB-BFHTS-M011-07-X	0.437 / 11 / -7	100 / \$143.33	N/A
AB-BFHTS-M013-08-X	0.500 / 13 / -8	100 / \$186.67	400 / \$997.00
AB-BFHTS-M016-10-X	0.625 / 16 / -10	100 / \$226.67	500 / \$1,565.00
AB-BFHTS-M019-12-X	0.750 / 19 / -12	100 / \$280.00	400 / \$1,332.00
AB-BFHTS-M022-14-X	0.875 / 22 / -14	100 / \$343.33	N/A
AB-BFHTS-M025-16-X	1.000 / 25 / -16	100 / \$403.33	250 / \$1,092.50
AB-BFHTS-M038-24-X	1.500 / 38 / -24	N/A	200 / \$1,500.00

For the X value, specify “TW” for thin wall and “SW” for standard wall

Thin Wall Thickness is .015” or 1/64 of an inch (0.38 mm) (300V space factor rating)
Standard Wall thickness is .032” or 1/32 of an inch (0.81mm) (600V space factor rating)

Standard Wall is normally stock, Thin Wall is typically 5 to 10 days delivery

Please call for additional discount pricing when ordering more than 5 spools.

This Product is NOT Available By-The-Foot – Full Spool Only