

## High Temperature Silicone Rubber Coated Fiberglass Sleeve with Velcro Closure: *Small Diameter*



High Temperature sleeve with Velcro hook and loop closure is a heavy duty sleeve perfect for protecting industrial hose and cable, but with the benefits of being installed & removed as required without disconnecting the hose, cable or wire.

Typical applications are as an Electric Arc Furnace cable cover, robotic welding cable protection, steel mill roll-stand hydraulic hose protection, steel mill cooling water hose protection or as a cover in extreme environments where serviceability is required.

The Velcro closure remains inside of the sleeve and is protected by the fabric overlap. The thread used is a high temperature Kevlar.

500°F / 260°C continuous rating with weld splatter / molten metal splash protection

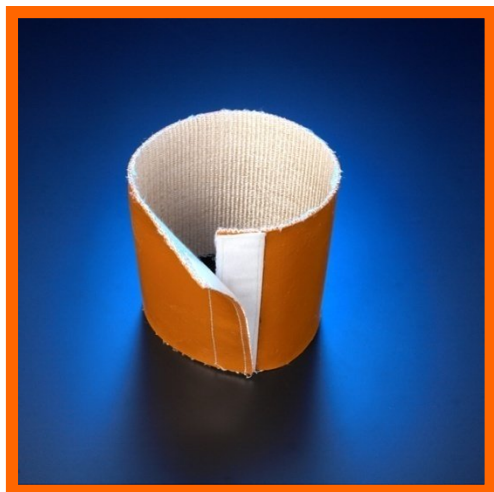
High Temperature Silicone Rubber Coated Fiberglass Sleeve with Velcro Closure – Small Diameter					
Nominal ID inches / mm / Dash #			Part Number	Velcro Width	Price Per Foot
1/2	13	-08	AB-FSVC-M013-08	1/2	\$ 14.56
3/4	19	-12	AB-FSVC-M019-12	1/2	\$ 17.34
1	25	-16	AB-FSVC-M025-16	3/4	\$ 20.29
1 1/4	32	-20	AB-FSVC-M032-20	3/4	\$ 22.60
1 1/2	38	-24	AB-FSVC-M038-24	3/4	\$ 24.83
1 3/4	44	-28	AB-FSVC-M044-28	3/4	\$ 26.77
2	51	-32	AB-FSVC-M051-32	3/4	\$ 29.00
2 1/4	57	-36	AB-FSVC-M057-36	3/4	\$ 31.23
2 1/2	64	-40	AB-FSVC-M064-40	3/4	\$ 33.49
2 3/4	70	-44	AB-FSVC-M070-44	3/4	\$ 35.80
3	76	-48	AB-FSVC-M076-48	3/4	\$ 37.94
3 1/4	83	-52	AB-FSVC-M083-52	3/4	\$ 40.34
3 1/2	89	-56	AB-FSVC-M089-56	3/4	\$ 42.29
3 3/4	95	-60	AB-FSVC-M095-60	3/4	\$ 44.51
4	102	-64	AB-FSVC-M102-64	2	\$ 48.37
4 1/4	108	-68	AB-FSVC-M108-68	2	\$ 50.54
4 1/2	114	-72	AB-FSVC-M114-72	2	\$ 52.94
4 3/4	121	-76	AB-FSVC-M121-76	2	\$ 55.17
5	127	-80	AB-FSVC-M127-80	2	\$ 57.54

Available in continuous lengths up to 150 feet. Turnbuckles can be added at \$3.49 each.

This is a custom fabrication item – please allow 3 to 10 business days from date of order. Contact us to determine the specific production time for your order.

**This Product is Available By The Foot**

## High Temperature Silicone Rubber Coated Fiberglass Sleeve with Velcro Closure: *Large Diameter*



High Temperature sleeve with Velcro closure is a heavy duty sleeve perfect for protecting industrial hose and cable, but with the benefits of being installed & removed as required without disconnecting the hose, cable or wire.

Typical applications are as an Electric Arc Furnace cable cover, robotic welding cable protection, steel mill roll-stand hydraulic hose protection, steel mill cooling water hose protection or as a cover in extreme environments where serviceability is required.

The Velcro closure remains inside of the sleeve and is protected by the fabric overlap. The thread used is a high temperature Kevlar.

500°F / 260°C continuous rating with weld splatter / molten metal splash protection

High Temperature Sleeve with Velcro Closure: Large Diameter					
Nominal ID inches / mm / Dash #			Part Number	Velcro Width	Price Per Foot
5 1/4	133	-84	AB-FSVC-M133-84	2	\$ 59.37
5 1/2	140	-88	AB-FSVC-M140-88	2	\$ 61.66
5 3/4	146	-92	AB-FSVC-M146-92	2	\$ 63.94
6	152	-96	AB-FSVC-M152-96	2	\$ 66.11
6 1/4	159	-100	AB-FSVC-M159-100	2	\$ 68.51
6 1/2	165	-104	AB-FSVC-M165-104	2	\$ 70.74
6 3/4	171	-108	AB-FSVC-M171-108	2	\$ 72.74
7	178	-112	AB-FSVC-M178-112	2	\$ 74.97
7 1/4	184	-116	AB-FSVC-M184-116	2	\$ 76.97
7 1/2	191	-120	AB-FSVC-M191-120	2	\$ 79.54
7 3/4	197	-124	AB-FSVC-M197-124	2	\$ 81.77
8	203	-128	AB-FSVC-M203-128	2	\$ 83.69
8 1/4	210	-132	AB-FSVC-M210-132	2	\$ 86.26
8 1/2	216	-136	AB-FSVC-M216-136	2	\$ 88.43
8 3/4	222	-140	AB-FSVC-M222-140	2	\$ 90.23
9	229	-144	AB-FSVC-M229-144	2	\$ 92.57
9 1/4	235	-148	AB-FSVC-M235-148	2	\$ 94.49
9 1/2	241	-152	AB-FSVC-M241-152	2	\$ 97.20
9 3/4	248	-156	AB-FSVC-M248-156	2	\$ 99.37
10	254	-160	AB-FSVC-M254-160	2	\$101.66
10 1/4	260	-164	AB-FSVC-M260-164	2	\$104.00
10 1/2	267	-168	AB-FSVC-M267-168	2	\$ 105.60
10 3/4	273	-172	AB-FSVC-M273-172	2	\$ 113.31
11	279	-176	AB-FSVC-M279-176	2	\$ 115.66
11 1/4	286	-180	AB-FSVC-M286-180	2	\$ 118.51
11 1/2	292	-184	AB-FSVC-M292-184	2	\$ 122.37
11 3/4	298	-188	AB-FSVC-M298-188	2	\$ 126.22
12	305	-192	AB-FSVC-M305-192	1 1/2	\$ 129.41

Available in continuous lengths up to 150 feet. Turnbuckles can be added at \$3.49 each.

This is a custom fabrication item – please allow 3 to 10 business days from date of order.

**This Product is Available By The Foot**